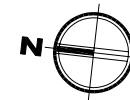
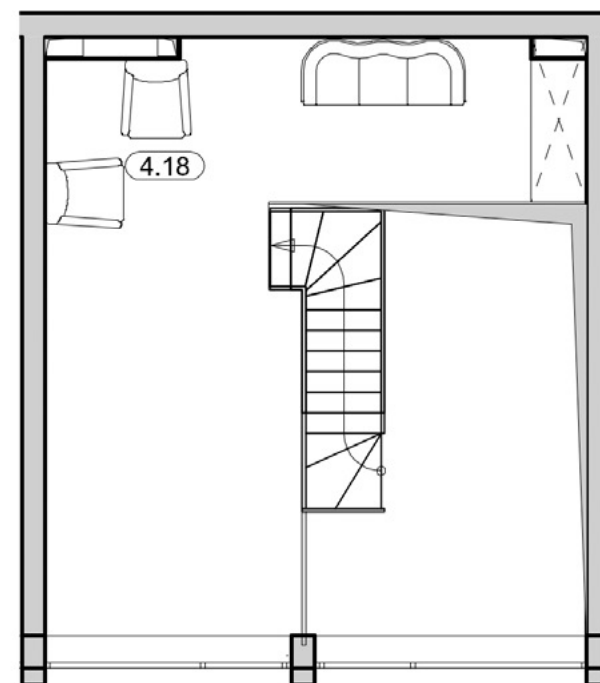
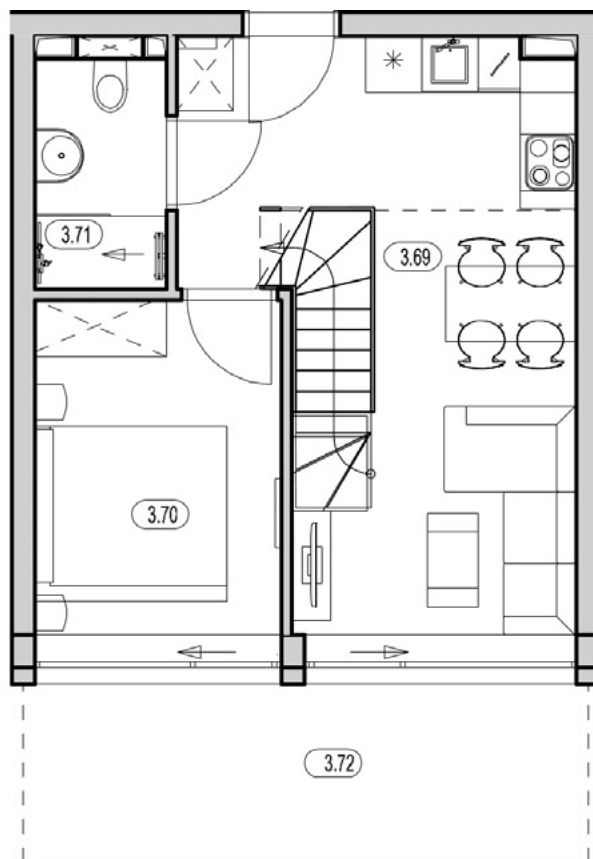
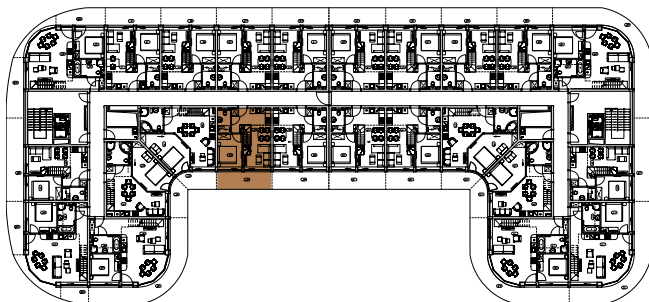


APARTAMENT B-18.2A Z ANTRESOLĄ

KONDYGNACJA: PIĘTRO II
POWIERZCHNIA: 35,33 m²



ZESTAWIENIE POMIESZCZEŃ

NR	NAZWA	m ²
3.69	Pokój z aneksem kuchennym	22,55
3.70	Sypialnia	9,46
3.71	Łazienka	3,32
3.72	Balkon	11,46
4.18	Antresola	22,22